

Bob Evans
FARMS®



ANNUAL GIVING REPORT

2021-2022

A MESSAGE FROM: MARK DELAHANTY



Welcome to our first annual giving report which presents a summary of Bob Evans Farms philanthropic activities in 2021 and 2022. The results highlight our efforts over the past two years because significant work has been done to establish our pillars of focus and enhance our presence in our communities during this time. Future annual reports will build on this foundational work.

During this period, our company and its employees were actively involved in giving back to our communities through volunteering, board service and strategic corporate giving. From our manufacturing facilities to our transportation center and corporate office, each employee had an opportunity to make a difference. In total, Bob Evans Farms donated over \$15.8 million in monetary contributions and fair market value product.

Through The Bob Evans Farms Foundation, a fund managed by The Columbus Foundation, **we contributed more than \$1.4 million in monetary contributions to our key partners.** We are pleased to report that our monetary giving grew by 3% from 2021 to 2022, despite the ongoing challenges posed by the COVID-19 pandemic.

We also significantly increased our food donations to help the growing number of families adversely affected by the downturn in the economy, **donating over \$14.4 million of fair market value product to food banks and other food-based nonprofits**, raising our annual food donations 132% year-over-year.

Bob Evans Farms continues to work to make our giving more impactful by focusing on organizations that support diversity, equity and inclusion. Our philanthropic pillars —Community, Education, Food and Nutrition, Health and Wellness, and Military – each have strategic goals to guide our efforts. I invite you to read more about them in this report.

We are grateful for the opportunity to make a positive difference in our communities while giving our employees a chance to help their neighbors. It is both an honor and a responsibility we take very seriously. We look forward to continuing this important work in the future.

Best,

Mark Delahanty
President and CEO, Bob Evans Farms

OUR MISSION

CREATE FARM-INSPIRED
FOOD THAT MAKES MEALTIME
A LITTLE BIT EASIER AND
A LOT MORE DELICIOUS.



OUR VISION

BE THE MARKET
LEADER IN DELIVERING
REAL, WHOLESOME,
FEEL-GOOD FAVORITES
FOR BUSY, EVERYDAY PEOPLE.



OUR VALUES

REFLECT THAT OUR
PEOPLE AND THEIR
BEHAVIORS MATTER.





PHILANTHROPIC PILLARS



PILLAR 1
COMMUNITY

Page 08



PILLAR 2
EDUCATION

Page 10



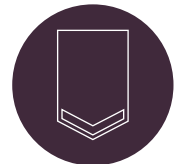
PILLAR 3
FOOD AND
NUTRITION

Page 14



PILLAR 4
HEALTH AND
WELLNESS

Page 18



PILLAR 5
MILITARY

Page 22

OUR PHILANTHROPIC MISSION

Support inclusive environments and programs that provide a positive impact on our employees and surrounding communities.

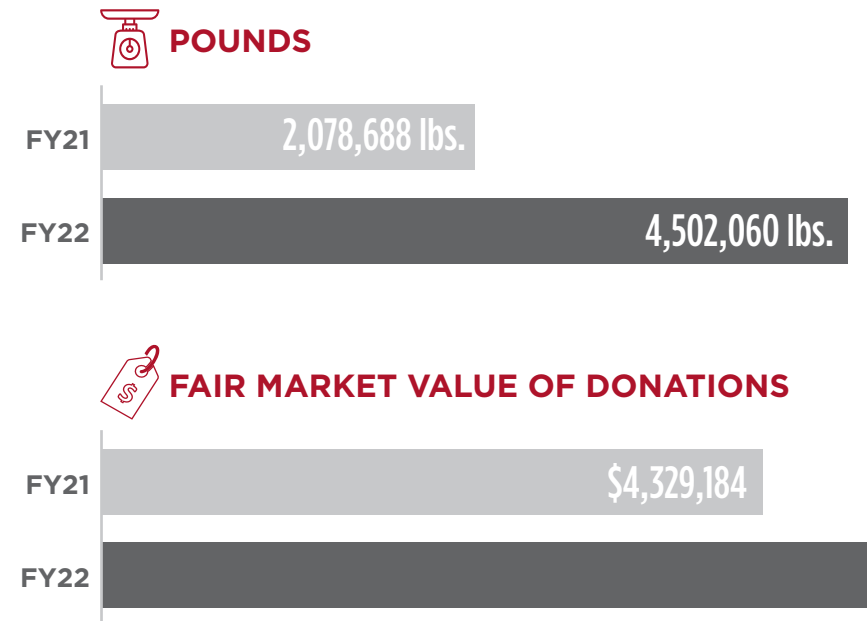
“We believe in embracing the uniqueness we all bring to create an environment where everyone feels welcome to contribute and where they can thrive and prosper on equitable terms. We continue working to ingrain DE&I into our culture and to make it our standard way of doing business so that it makes an impact on our communities, culture, workplace and marketplace.”

MARK DELAHANTY,
PRESIDENT AND CEO, BOB EVANS FARMS



FOOD DONATIONS

FY21 & FY22

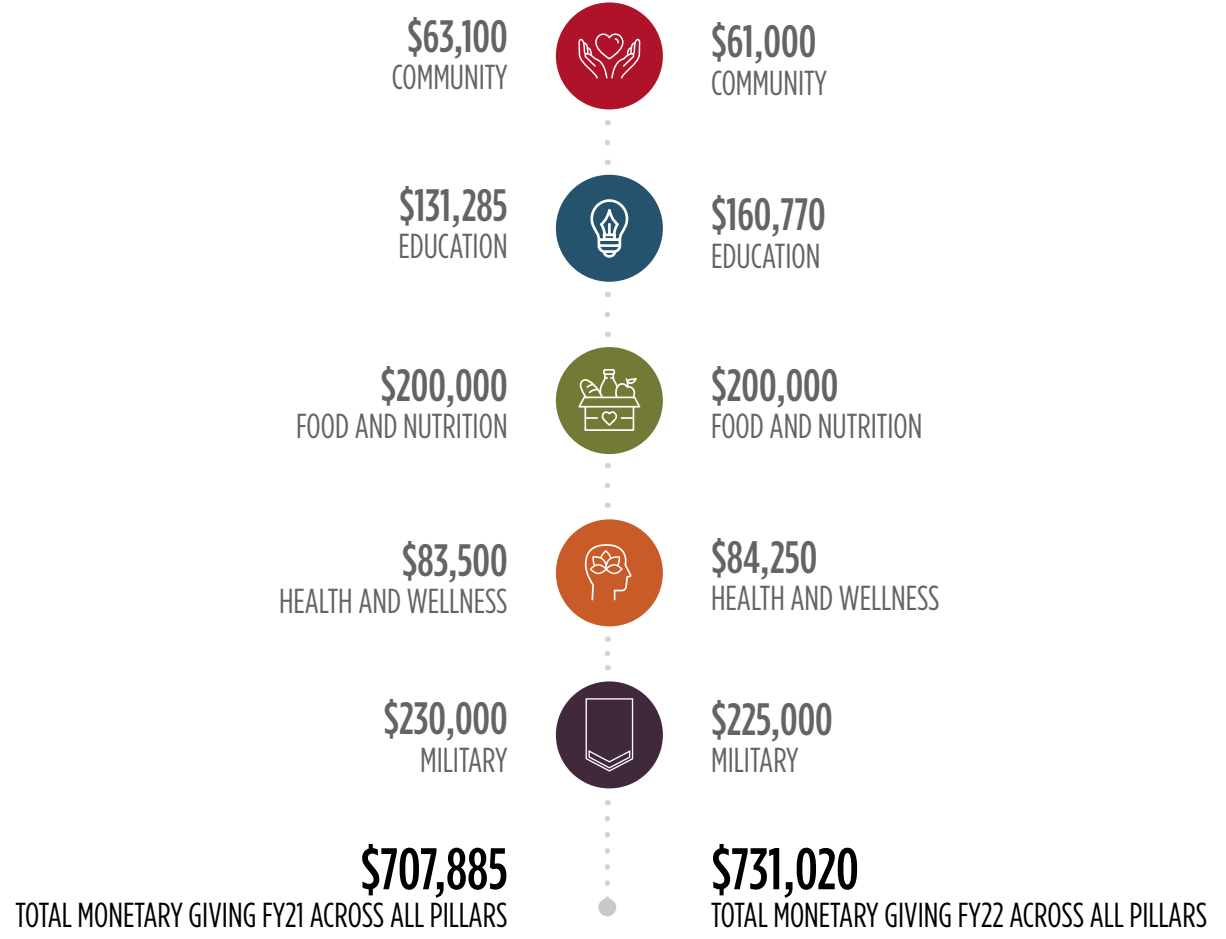


FOOD DONATIONS TOTAL

\$14.4 MILLION
TOTAL FOOD DONATIONS IN FY21 AND FY22 ACROSS ALL PILLARS

MONETARY GIVING

FY21 & FY22



\$1.4 MILLION
TOTAL MONETARY GIVING FY21 AND FY22 ACROSS ALL PILLARS

DID YOU KNOW?

Bob Evans Farms employees spent **525 HOURS VOLUNTEERING** during FY21 and FY22

Bob Evans Farms monetary giving **INCREASED BY 3%** from 2021 to 2022

Bob Evans Farms food donations **INCREASED BY 132%** from 2021 to 2022



PILLAR 1 COMMUNITY

Bob Evans Farms (BEF) is proud to support the communities in which we do business. We partner with numerous community organizations through volunteerism, financial donations, collection drives, sponsorships and in-kind donations. BEF employees are also encouraged to serve on the boards of their local nonprofit community organizations.



Dress for Success

Bob Evans Farms supported [Dress for Success Columbus](#) as a major sponsor of *Dine.Drink.Dress.*, an annual signature event in July 2022 at the Columbus Museum of Art to benefit the mission of Dress. Dress empowers women to achieve economic independence by providing a network of support, professional attire and career development tools to help them thrive in work and life. In addition, BEF hosted a collection drive for the organization in September 2022.



Lutheran Social Services

[Lutheran Social Services \(LSS\)](#) seeks to create a better world by serving people in need. In October 2021, during National Domestic Awareness Month, Bob Evans Farms sponsored the LSS *Choose Hope* fundraiser to raise awareness about domestic violence in our community and critical funding for LSS.



“We are grateful for Bob Evans Farms’ longstanding and continued partnership based on our shared values of community, youth development and the future of Ohio agriculture.”

KELLY BURNS,
EXECUTIVE DIRECTOR,
OHIO FARM BUREAU FOUNDATION



Ohio Farm Bureau Foundation

[Ohio Farm Bureau Foundation](#) is dedicated to working together with farmers to build a robust agricultural community in Ohio. As a long-time partner of Ohio Farm Bureau Foundation, Bob Evans Farms supports the organization through the Fisher Fund Scholarship program, Annual Breakfast and Golf Tournament to help further Ohio Farm Bureau Foundation mission and programming efforts.



GIVING

● = \$5,000

FY21:



\$63,100

FY22:



\$61,000



PILLAR 2 EDUCATION

Bob Evans Farms seeks to advance educational opportunities and access for students of all ages through partnerships with several key education-based organizations. BEF champions these organizations through volunteerism, financial contributions and board leadership.

In fiscal years 2021 and 2022, BEF supported the following education-based organizations: Center of Science and Industry (COSI), Ohio Cattlemen’s Association, Ohio 4-H, The Ohio State University Foundation, United Negro College Fund (UNCF) and United Schools Network.



United Schools Network (USN)

The [USN](#) mission is to “transform lives and our communities through the power of education.” The Network, comprised of four high-performing, non-profit charter schools, serves more than 1,000 students across Columbus, Ohio. USN is helping to close the achievement gap for families that identify as economically disadvantaged. Students are provided with both the academic and life skills that enable them to perform competitively versus their district peers, and to gain entry and success in the most demanding high schools, colleges and careers.



Bob Evans Farms partners with USN through financial and in-kind donations and volunteerism. Two of our Leadership Team members serve on the USN Board of Trustees.

“Bob Evans Farms’ extensive involvement in the 2022 COSI Science Festival was critical to making this initiative a success. They contributed to an exciting atmosphere of STEM engagement and played an important role in helping COSI increase science literacy in our community.”

ALAN GOSS,
DIRECTOR OF
THE COSI SCIENCE FESTIVAL



Center of Science and Industry (COSI)

Science and food come together in this exciting partnership! [COSI](#) Columbus strives to “engage, inspire and transform lives and communities by being the best partner in science, technology and industry learning.” BEF participated in the COSI 2022 Science Festival to showcase how STEM manifests into daily work and life through the R&D team’s demonstration of “The Science of Mac & Cheese.” In addition, BEF volunteers distributed kits to our partners at United Schools Network this year, and last year to a Worthington, Ohio, elementary school.





The Ohio State University Foundation

In 2022, Bob Evans Farms was honored by [The OSU Foundation](#) as a 50-year supporter of the The Ohio State University and the College of Food, Agricultural, and Environmental Sciences. Mark Delahanty, President and CEO, accepted the award on behalf of BEF and noted, "Bob Evans himself was a long-time supporter of the College of Food, Agricultural, and Environmental Sciences and a passionate advocate for Ohio 4-H. He developed the bond between our two organizations. Throughout the years, this bond has continued to strengthen and grow."



THE OHIO STATE UNIVERSITY

COLLEGE OF FOOD, AGRICULTURAL, AND ENVIRONMENTAL SCIENCES



Ohio 4-H

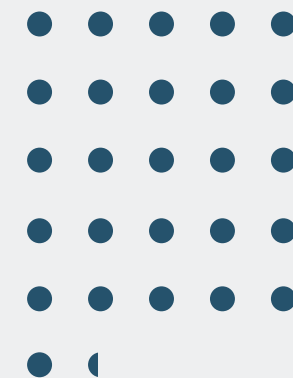
As a deeply-rooted advocate for [Ohio 4-H](#), BEF continued its commitment to the organization in several ways. BEF supported a 4-H scholarship and the 4-H volunteer conference. And the company was a sponsor of the annual "Celebration of Youth" event which raises funds to benefit 4-H youth development, programming and operations across all 88 Ohio counties and reaches more than 156,000 Ohio 4-H youth. In 2022, Celebration of Youth raised over \$137,000!



GIVING

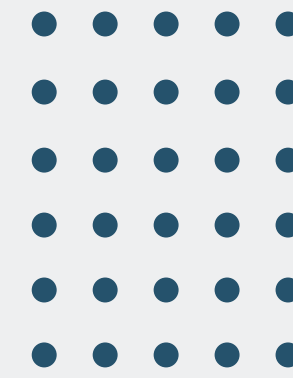
● = \$5,000

FY21:



\$131,285

FY22:



\$160,770



**23%
YOY INCREASE!**



PILLAR 3

FOOD AND NUTRITION

As a food manufacturing company, it's our mission to make mealtime easier. That includes making sure our communities have access to delicious, wholesome food.

Our focus on food and nutrition as a philanthropic pillar includes support for organizations like Mid-Ohio Food Collective (MOFC), Children's Hunger Alliance (CHA), Lutheran Social Services (LSS) of Central Ohio and the Ohio Poultry Association (OPA).



Children's Hunger Alliance

[Children's Hunger Alliance](#) is committed to breaking the cycle of childhood hunger and obesity in Ohio through education, leadership, advocacy and service. The agency works with schools, childcare providers and other groups to ensure all children are well-nourished, healthy and thriving. That means providing breakfast, after-school snacks, weekend and summer meals to kids of all ages across Central Ohio.

For more than 15 years, Bob Evans Farms has been a major sponsor of the Children's Hunger Alliance Menu of Hope fundraising luncheon each February. In 2022, BEF volunteers participated in two meal packing events for the nonprofit. BEF is proud to help kids across the state receive nutritious meals to help them live healthier lives.



Mid-Ohio Food Collective

[Mid-Ohio Food Collective](#) includes the largest foodbank in Ohio, the Mid-Ohio Foodbank, which serves 20 Ohio counties and provides more than 170,000 meals a day to hungry Ohioans. MOFC is also the umbrella organization to smaller initiatives, including the Mid-Ohio Farm, Mid-Ohio Markets, Mid-Ohio Farmacy and Mid-Ohio Kitchen. The Collective's network includes 700 partner agencies, connecting those in need to nutritious food.

Bob Evans Farms made a four-year pledge of \$125,000 each year and is donating an additional \$500,000 in fair market value food to the MOFC. BEF employees also volunteer regularly at MOFC. Each December, our teams take donations by phone during MOFC's Double Your Donation Day (DYDD) telethon. In 2022, we also provided a \$50,000 matching donation for DYDD.



“Bob Evans Farms is an amazing partner to Mid-Ohio Food Collective. Their \$1 million commitment to our ‘Rooted in You’ Campaign helps MOFC improve the experience and quality of service we give to our customers and increases our ability to connect food to families. Their annual support of Double Your Donation Day and their ongoing service through volunteering meet two of MOFC’s crucial needs as we continue to work towards ending hunger.”

MATT HABASH,
PRESIDENT/CEO, MID-OHIO FOOD COLLECTIVE



Lutheran Social Services of Central Ohio

LSS Network of Hope serves Ohioans in need through a variety of social services, including homeless shelters, domestic violence shelters, senior housing and food pantries.

Bob Evans Farms has long supported LSS in its mission to “love our neighbors.” In 2022, BEF employees collected 225 hygiene care kits for families in the Columbus Linden neighborhood to support the LSS drive-through pantry. The pantry provides food and produce as well as health and hygiene necessities not typically available at food pantries.



Ohio Poultry Association

The Ohio Poultry Association represents more than 1,000 egg, chicken and turkey farmers across the state, all committed to providing safe, high-quality and affordable food products for families.

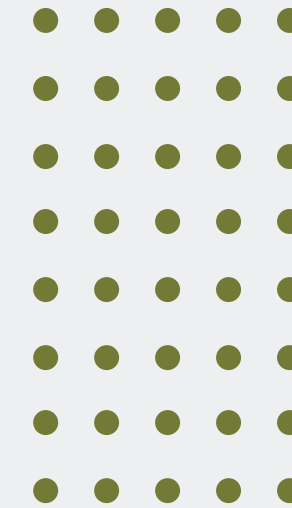
In 2021 and 2022, Bob Evans Farms donated its crowd-pleasing Original Mashed Potatoes to the OPA for their Taste of Ohio Café booth at The Ohio State Fair. Each year, the OPA serves approximately 3,000 dishes of our potatoes at the Fair.



GIVING

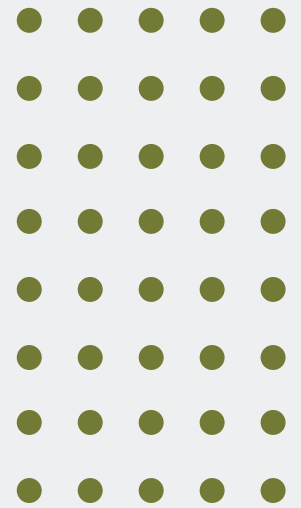
● = \$5,000

FY21:



\$200,000

FY22:



\$200,000



PILLAR 4

HEALTH AND WELLNESS

For many years, Bob Evans Farms has supported health and wellness in our communities. As a family-oriented company, BEF focuses our giving on organizations that ease the suffering of those facing life-threatening illnesses, such as cancer.

In fiscal years 2021 and 2022, BEF supported many health-centered nonprofits in our hometown of Columbus, Ohio, including Cancer Support Community Central Ohio, NC4K and Ronald McDonald House Columbus (RMHC).



NC4K

[NC4K](#), or Nellie's Champions For Kids, believes that no child should fight cancer alone. NC4K provides financial support, emotional support and "events for play" for pediatric cancer families living or being treated in the state of Ohio. In 2021, Bob Evans Farms sponsored a table at the NC4K fundraising gala, kicking off a relationship that continues to grow. In 2022, BEF again supported NC4K with a gala table, and also hosted a holiday pop up shop for employees, with proceeds benefiting NC4K.



“Bob Evans Farms is a company with so much heart. We are so very fortunate and honored to have them supporting us. It’s only through their generosity that we can make sure no one faces cancer alone.”

BEV SOULT,
PRESIDENT AND CEO,
CANCER SUPPORT COMMUNITY
CENTRAL OHIO



Cancer Support Community Central Ohio

[Cancer Support Community Central Ohio](#) empowers people impacted by cancer (patients, their families and caregivers) through free programs and services such as support groups so no one faces cancer alone.

For the past two years, Bob Evans Farms has supported Night of Chocolate, CSCCO's premier fundraiser, as a sponsor. In 2021, CEO Mark Delahanty served as Honorary Chair of the event. BEF has also long supported CSCCO's Golf Classic with volunteers. In addition, BEF is the naming sponsor of CSCCO Community Center in North Columbus.





Ronald McDonald House

[Ronald McDonald House](#) programs provide comfort, care and support for families with sick children when they are needed most. Ronald McDonald House Columbus is adjacent to Nationwide Children’s Hospital, providing 137 guest rooms to the families of kids receiving care. RMHC also hosts family rooms at two other local hospitals where families can find respite, and offers a mobile program, bringing healthcare to kids within their communities.

In 2022, Bob Evans Farms employees supported RMHC with a pop tab collection campaign; aluminum collected helps pay for the House’s utilities. Employees also donated holiday gifts for children and families staying at the House.



“Lutheran Social Services is thankful for our partnership with Bob Evans Farms and appreciates all the ways they help us uplift individuals and families in our community. From supporting our shelter and services at LSS CHOICES for Victims of Domestic Violence to providing meals at LSS Faith Mission for veterans experiencing homelessness, Bob Evans Farms helps advance our mission of creating a better world by serving people in need.”

**THE REV. LARRY A. CROWELL,
INTERIM PRESIDENT AND CEO,
LUTHERAN SOCIAL SERVICES**

GIVING

● = \$5,000

FY21:



\$83,500

FY22:



\$84,250



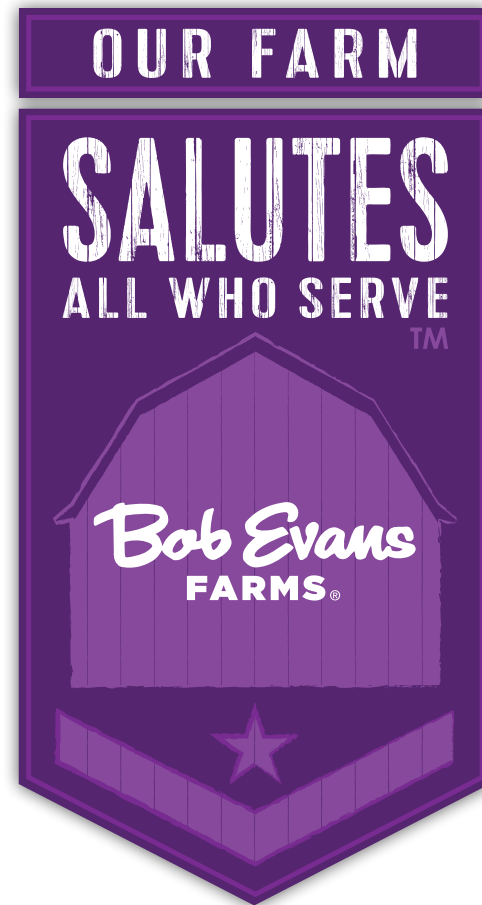
PILLAR 5 MILITARY

Bob Evans Farms is a proud supporter of our nation's military and its Veterans. As a Veteran, our founder Bob Evans was committed to supporting America's military heroes and their families.

In 2021 and 2022, Bob Evans Farms supported military organizations including the Gary Sinise Foundation, Bunker Labs, USO and Operation Purple® Camp as part of the **Our Farm Salutes** initiative, and also supported the M.A.S.H. Pantry.

Our Farm Salutes

Created by Bob Evans Farms in 2016, [Our Farm Salutes](#) helps America's military heroes and their families through volunteerism, strategic partnerships, grant opportunities, awareness and donations. Through a variety of programs, each focused on a different need, BEF strives to provide aid to military heroes, raise awareness of the various issues they confront and assist in creating a better life for them and their families.



Heroes to CEOs

[Heroes to CEOs \(H2C\)](#) is an annual contest promoted through the Bob Evans Farms *Our Farm Salutes* initiative, a national philanthropic mission dedicated to supporting U.S. military heroes and their families through awareness, donations, strategic partnerships, grant opportunities and volunteerism. BEF awarded a total of \$215,000 to Veteran entrepreneurs over the past two years. Winners also received professional mentoring from some of the most inspiring Veteran entrepreneurs in the U.S. This was BEF's sixth year sponsoring the program; the company has awarded \$450,000 to Veteran-owned businesses and organizations since the *Heroes to CEOs* program began in 2017.



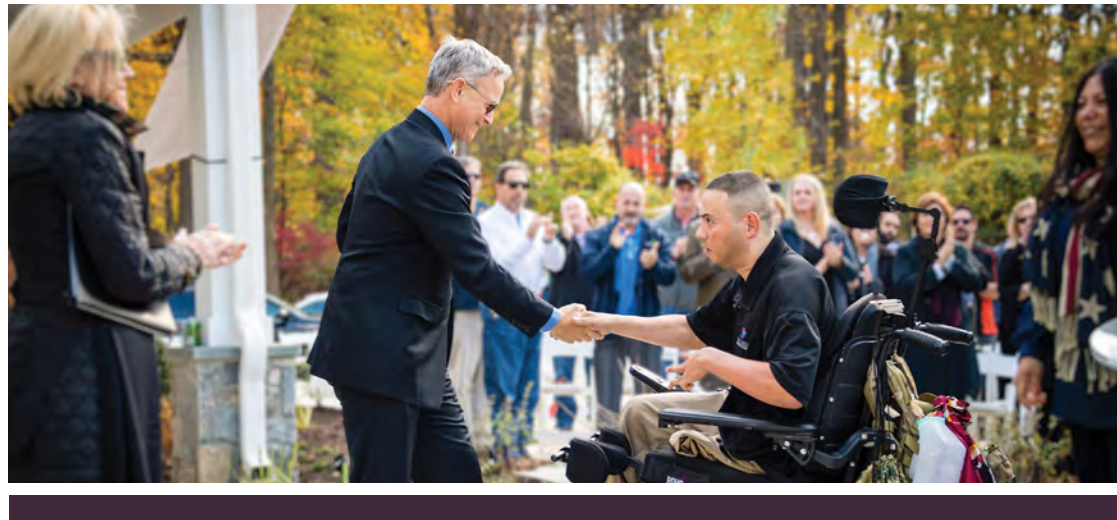
DID YOU KNOW?

Purple symbolizes all branches of the military: It is the combination of Army green, Coast Guard blue, Air Force blue, Marine red and Navy blue.

“To have this (Heroes to CEOs) grant, to do what I hope to do and to continue [my work], feels like a full circle moment. I appreciate Bob Evans Farms doing what they said they would and supporting Veterans and investing in us.”

**ZEPHRINE MITCHELL HANSON,
FOUNDER, HAMPDEN FARMS**

\$215,000 TOTAL GRANTED TO VETERAN ENTREPRENEURS IN 2021-2022



Making a Difference, Bite by Bite

Bob Evans Farms launched [Making a Difference, Bite by Bite](#), as part of its *Our Farm Salutes* initiative to support valuable services for our military heroes. In 2021, the company donated \$100,000 to the USO. In 2022, BEF donated \$75,000 to the Gary Sinise Foundation (GSF),



an organization dedicated to seeing that our heroic members of the military receive the post-traumatic care they need, and to reducing the stigma surrounding mental wellness issues. Specially-marked Bob Evans and Owens products also proudly turned purple from August through November 2022, raising awareness for active duty and Veteran mental wellness.



“Like our foundation, Bob Evans Farms believes that there is always more we can do to show our appreciation for the military. With its support of GSF, Bob Evans Farms is helping us improve the mental wellness of the men and women who have sacrificed so much for our country.”

GARY SINISE,
ACTOR, HUMANITARIAN & FOUNDER
OF GARY SINISE FOUNDATION



Purple Heroes

Military kids are special kids. From frequent family moves to long-distance parenting, they face a life of uncertainty and constant change. Like their parents, their lives are also lives of service to their country, which is why Bob Evans Farms expanded its *Our Farm Salutes* initiative in 2022 to include a new program, [Purple Heroes](#), focused on helping military families.

In 2022, BEF donated \$60,000 to Operation Purple® Camp, a National Military Family Association program. The donation allowed 100 military kids the opportunity to attend a free week of summer camp for the 2022 season.



Operation Purple®
Program



M.A.S.H. Pantry and Resource Center

Founded by U.S. Navy Veteran, Amber Hudson, [M.A.S.H.](#) provides crucial support like food and hygiene items, support resources, vocational assistance and more to our American Veterans, Military families and survivors throughout Central Ohio.

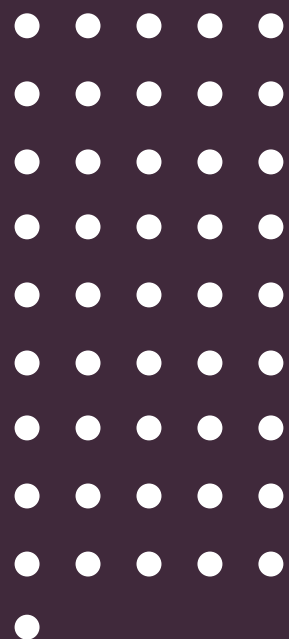
In 2021, Bob Evans Farms partnered with the M.A.S.H. Pantry and The American Legion Post 164 to donate and distribute over 3,700 cases of Bob Evans Mac & Cheese to Veterans in need.



GIVING

● = \$5,000

FY21:



\$230,000

FY22:



\$225,000

A MESSAGE FROM: DEVRA CORNELL



Bob Evans Farms has a long history of giving back to our communities. Our founder, Bob Evans, set the foundation for our philanthropic efforts 75 years ago with his passion for education, nutrition and health.

Today, we continue to support causes that Bob cared about, including Ohio 4-H, COSI, Mid-Ohio Food Collective, Cancer Support Community Central Ohio, Ohio Farm Bureau Foundation and many others. We also proudly honor Bob's service in the Army by supporting our nation's military members and their families through the *Our Farm Salutes* program.

In addition to corporate giving, we support employees who wish to volunteer their time and skills to make a positive impact in their communities. We are so proud of the way our team members generously give of themselves to make a positive impact in their communities, particularly in central Ohio.

As we look to the future, we remain committed to being intentional and strategic in our giving. We regularly review our philanthropic activity to ensure our efforts are strategically aligned with our corporate mission, vision and values.

I am grateful for the opportunity to work for a company that cares so deeply about giving back and making a positive difference in the world and am proud of the work our team has done to pave the way for many more years of positive community impact.

Devra Cornell
Chief Human Resources Officer, Bob Evans Farms

NON-PROFIT BOARD MEMBERSHIPS

Nicole Bainbridge, VP, Trade Marketing
Canine Companions for Independence, North Central Region, Board Member

Cassandra Binkley, Sr. Manager, Philanthropy
COSI, Community Board Member

Dress for Success, Columbus, Executive Board

John Broekema, SVP, Sales
Ohio Grocers Association, Director

Devra Cornell, CHRO
Ohio 4-H Foundation, Executive Board Member

Cancer Support Community Central Ohio, Executive Board Member

Adam Gonsiorowski, VP, Finance
United Schools Network, Chairman of the Finance Committee

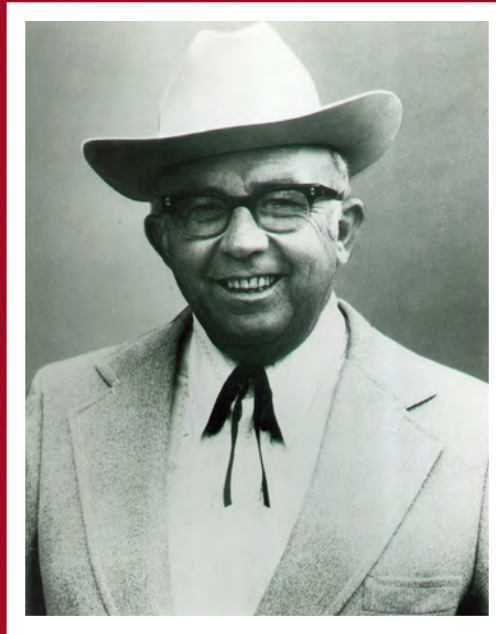
Thyme Hill, CMO
NC4K, Executive Board

Ciare James, VP, Marketing
United Schools Network, Co-Vice Chair

Aaron Kingsley, Sr. Account Manager - Kroger
Give Hope Ministries, Board Member

Jeff Moore, Sr. Team Leader
Blaine Youth Lacrosse Association, Girls Youth Director

Jason Roche, VP/GM, New Growth Ventures
Children's Hunger Alliance, Regional Board Member



Bob Evans
FARMS®

bobevasngrocery.com

OUR FAMILY OF BRANDS

Bob Evans®



**SIMPLY
POTATOES®**

Learn more about our parent company's Environmental, Social and Governance (ESG) program by visiting: postholdings.com/responsibility.